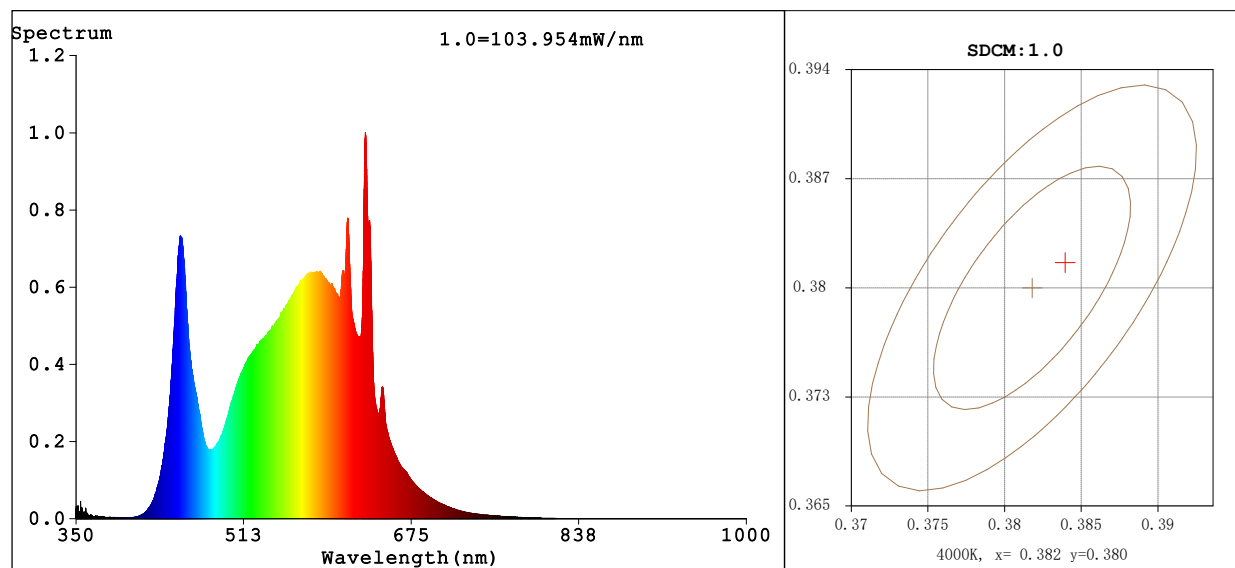


Spectrum Test Report



Color Parameters:

Chromaticity Coordinate: $x=0.3840$ $y=0.3814$ $u'=0.2256$ $v'=0.5041$
CCT=3940K (Duv=0.0011) Dominant WL:Ld =578.7nm WL:Lc = --nm Purity=29.7%
Ratio:R=18.5% G=78.1% B=3.4% Peak WL:Lp=630.6nm FWHM=10.0nm
Render Index:Ra=82.7 AvgR=76.0 TM30:Rf=84 Rg=95

R1 =81 R2 =88 R3 =94 R4 =81 R5 =80 R6 =84 R7 =87
R8 =67 R9 =13 R10=72 R11=79 R12=59 R13=82 R14=96 R15=76

Photo Parameters:

Flux = 3930 lm Eff. : 99.80 lm/W Fe = 11.45 W

Electrical parameters:

V = 231.14 V I = 0.1755 A P = 39.38 W PF = 0.9707

Kdisp(IEC) = 0.9770

LEVEL:OUT WHITE:ANSI_4000K

Status: Integral T = 52 ms Ip = 36942 (56%)

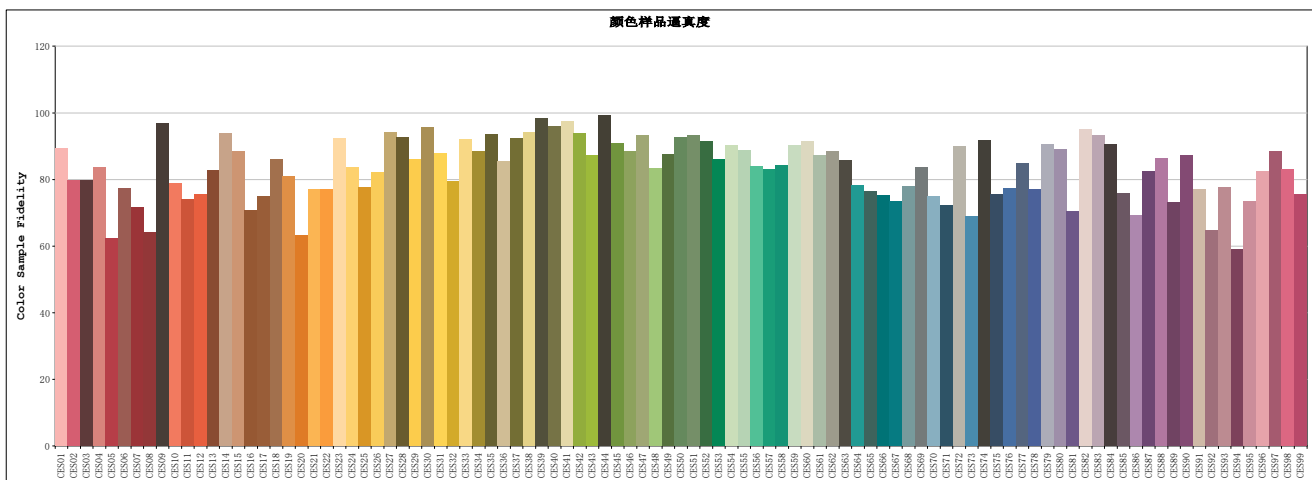
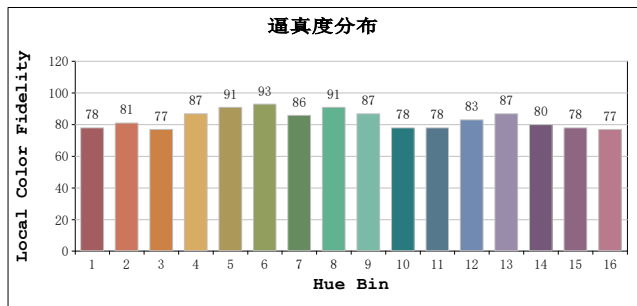
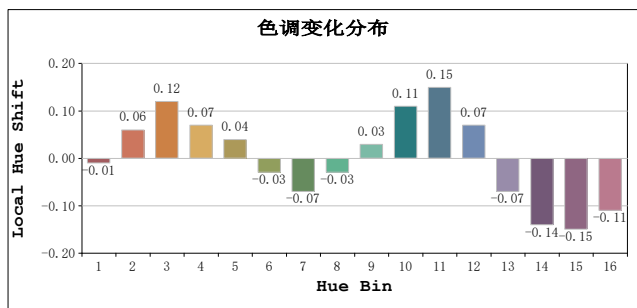
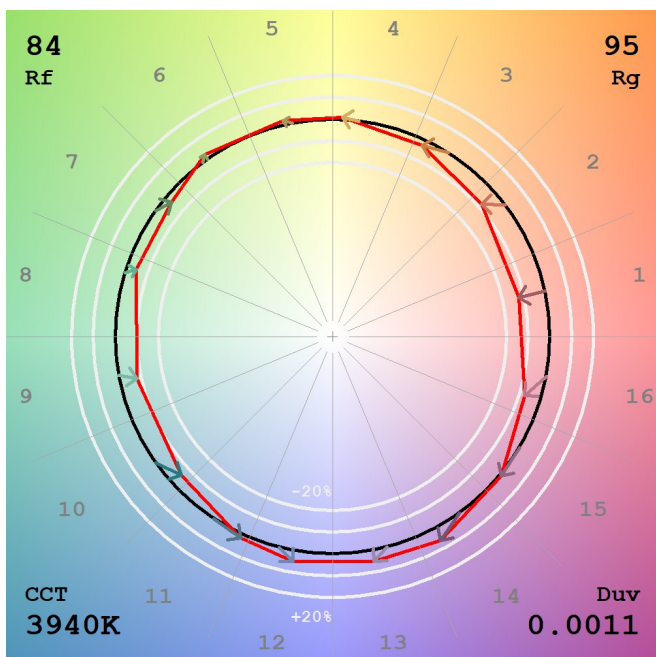
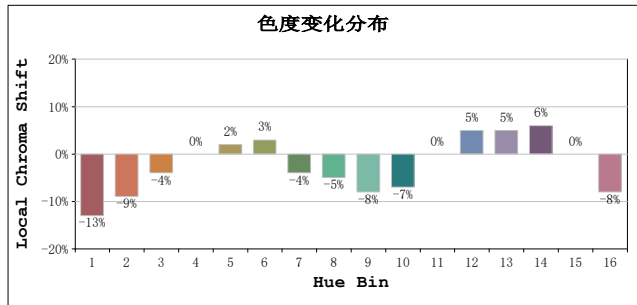
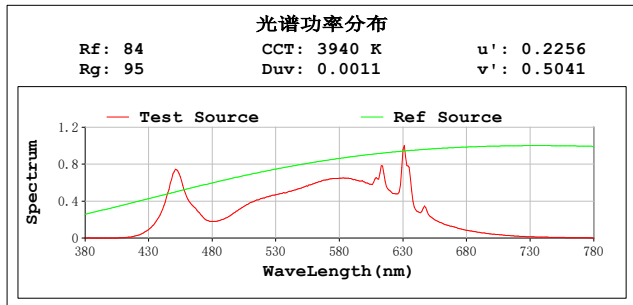
GBT5702

Model:
Tester:
Temperature:25.3Deg
Manufacturer:

Number:202
Date:2026-01-18 09:50:56
Humidity:65.0%
Remarks:

TM30

视场角:2 度



Model:
Tester:
Temperature:25.3Deg
Manufacturer:

Number:202
Date:2026-01-18 09:50:56
Humidity:65.0%
Remarks: